



The Distinctive Effects of Glucose-Derived Carbon on the Performance of Ni-Based Catalysts in Methane Dry Reforming

Upm Ashik, Shusaku Asano, Shinji Kudo, Doan Pham Minh, Srinivas Appari, Einaga Hisahiro, Jun-Ichiro Hayashi

► To cite this version:

Upm Ashik, Shusaku Asano, Shinji Kudo, Doan Pham Minh, Srinivas Appari, et al.. The Distinctive Effects of Glucose-Derived Carbon on the Performance of Ni-Based Catalysts in Methane Dry Reforming. *Catalysts*, 2020, 10 (1), pp.1-14/21. 10.3390/catal10010021 . hal-02439535

HAL Id: hal-02439535

<https://imt-mines-albi.hal.science/hal-02439535>

Submitted on 14 Jan 2020

HAL is a multi-disciplinary open access archive for the deposit and dissemination of scientific research documents, whether they are published or not. The documents may come from teaching and research institutions in France or abroad, or from public or private research centers.




L'archive ouverte pluridisciplinaire **HAL**, est destinée au dépôt et à la diffusion de documents scientifiques de niveau recherche, publiés ou non, émanant des établissements d'enseignement et de recherche français ou étrangers, des laboratoires publics ou privés.



Distributed under a Creative Commons Attribution 4.0 International License

Article

The Distinctive Effects of Glucose-Derived Carbon on the Performance of Ni-Based Catalysts in Methane Dry Reforming

UPM Ashik ¹, Shusaku Asano ¹, Shinji Kudo ¹, Doan Pham Minh ², Srinivas Appari ³, Einaga Hisahiro ⁴ and Jun-ichiro Hayashi ^{1,5,*}

¹ Institute for Materials Chemistry and Engineering, Kyushu University, 6-1, Kasuga Koen, Kasuga 816-8580, Japan; urampully@cm.kyushu-u.ac.jp (U.A.); shusaku_asano@cm.kyushu-u.ac.jp (S.A.); shinji_kudo@cm.kyushu-u.ac.jp (S.K.)

² RAPSODEE CNRS UMR-5302, IMT Mines Albi, Université de Toulouse, CT CEDEX 09, 81013 Albi, France; Doan.phamminh@mines-albi.fr

³ Department of Chemical Engineering, Birla Institute of Technology and Science, Pilani, Rajasthan 333 031, India; srinivas.appari@pilani.bits-pilani.ac.in

⁴ Faculty of Engineering Sciences, Kyushu University, 6-1, Kasuga Koen, Kasuga, Fukuoka 816-8580, Japan; einaga.hisahiro.399@m.kyushu-u.ac.jp

⁵ Transdisciplinary Research and Education Center of Green Technology, Kyushu University, Kasuga 816-8580, Japan

* Correspondence: junichiro_hayashi@cm.kyushu-u.ac.jp; Tel.: +81-92-583-7796

Received: 29 November 2019; Accepted: 20 December 2019; Published: 23 December 2019



Abstract: This study aimed to investigate the effect of carbon derived from glucose (C) on the physicochemical characteristics and catalytic activity of Ni, supported over SiO₂, ZSM-5, and TiO₂ in methane dry reforming. Among the Ni catalysts without C, Ni/SiO₂ exhibited the highest CH₄-CO₂ conversion and stability at all experimented temperatures. On the other hand, the C-incorporated catalysts prepared by glucose impregnation, followed by pyrolysis, showed dissimilar performances. C improved the stability of Ni/SiO₂ in the reforming at 650 °C and 750 °C and increased the CH₄ and CO₂ conversion to the level close to the thermodynamic equilibrium at 850 °C. However, this element did not substantially affect the activity of Ni/ZSM-5 and exerted a retarding effect on Ni/TiO₂. Characterizations with H₂-TPD, XRD, EXAFS, and STEM-EDS revealed that the different influences of C by the supports were attributed to the extent of metal dispersion and metal-support interaction.

Keywords: methane dry reforming; syngas; Ni-catalyst; ZSM-5; SiO₂; TiO₂; glucose-derived carbon; metal dispersion

1. Introduction

Since the start of modern recordkeeping in 1880, the warmest earth surface was documented in 2016, and 17 of the 18 warmest years ever recorded occurred from 2001 [1]. The major cause of this massive global warming is the anthropogenic greenhouse gas (GHG) emissions, chiefly consisting of CO₂ and CH₄ [2]. Studies conclusively validate the huge upsurge of average global tropospheric CO₂ concentration from 315 ppm to 408 ppm in the 60 years since 1958 [3]. A similar increasing trend has been observed for CH₄ as well. The average global tropospheric CH₄ concentration was 1850 ppb in 2017, which was only 1630 ppb in 1984 [4]. A firm and favorable change in the current trend of global warming could be achieved by coupling GHG emission reductions and transforming CO₂ and CH₄ to value-added products [5–7]. Here is the advantage of dry reforming of methane (DRM), which converts CH₄-CO₂ gas mixture to H₂ and CO with a ratio that fits for Fischer–Tropsch (F-T) synthesis.

Combining DRM with syngas conversion for liquid hydrocarbons, fuels, and other industrial products will substantially decrease GHG emission and our preposterous reliance on fossil fuel. As per the theoretical findings of Akiyama et al. [8], the thermal energy of high-temperature waste heat, e.g., from a solid oxide fuel cell or steel industry [9], can be converted to chemical energy in DRM process, thus making the overall process of $\text{CO}_2\text{-CH}_4$ elimination exceptionally environmentally-friendly.

Various transition and noble metal catalysts have been utilized to reduce reaction temperature and increase the syngas yield. However, the major challenges include the high cost of noble metals, the requirement of nanosized catalysts and catalysts deactivation by carbon deposition, and thermal sintering. Irrespective of their advantages of low or no carbon deposition and high activity, noble metals (Rh, Ru, Pt) are not extensively used in industry due to their high cost [10]. Among the investigated catalysts, Ni-based catalysts have received remarkable interest because of their cost-effective availability and good activity and selectivity in syngas [11]. Furthermore, highly dispersed Ni-based catalysts exhibit reasonable intrinsic activity. However, active phase sintering and/or huge carbon formation and subsequent catalyst deactivation are the major concerns that inhibit the scale-up and commercial practice of these materials [11]. In addition, side reactions, such as water gas shift, methanation, Boudouard reaction, CO decomposition, and methane decomposition, collectively and individually cause low product yield.

Extensive investigations are reported on improving catalytic activity and reducing deactivation, and the predominantly investigated topics include metal loading [12], pretreatment [13], catalyst preparation methods [14], second-metal doping [15], and support modification [16]. Researchers unitedly explained the importance of proper support that improves the active phase dispersion. As a result, the total textural properties could lead to outstanding product selectivity and catalyst stability. Many researchers investigated and successfully modified catalysts with CeO_2 or the oxides of other base metals (Na, K, Mg, and Ca) to suppress carbon deposition [17,18]. However, the utilization of inexpensively available carbon precursors for Ni-based catalyst improvement is poorly investigated. Li et al. [19] observed poor catalytic performance in the presence of doped carbon. They improved the catalytic performance by pretreating with CO_2 ; however, pretreatment with H_2 and N_2 were not competitive. The deposited carbon after CO_2 pretreatment enforced the metal-support interaction and suppressed carbon deposition over the active catalyst surface during DRM. To the best of authors' knowledge, no comparative study has been conducted on the catalytic performance of carbon-doped Ni-catalysts supported on various materials.

In this study, we comprehensively examined the distinctive effect of in situ produced carbon from glucose during the preparation of Ni-catalyst supported over SiO_2 , ZSM-5, and TiO_2 on the physicochemical characteristics and catalytic activity toward DRM. The impregnation method was used to synthesize Ni-supported and C-doped catalysts with a constant metal loading (10 wt.%). DRM activity of the catalysts was investigated in a fixed-bed reactor at temperatures in the range of 650–850 °C by using a feed gas mixture of CH_4/CO_2 (molar ratio = 1/1).

2. Results and Discussions

2.1. Dry Reforming of Methane

DRM experiments were conducted using CH_4 and CO_2 feed gas mixture with a molar ratio of 1/1 at three different temperatures (650 °C, 750 °C, and 850 °C). The composition of the gaseous product was recorded every 4 min. The catalyst with deposited carbon was collected after each experiment and then characterized. Conversions of CH_4 and CO_2 with investigated catalysts at different temperatures are shown in Figures 1 and 2, respectively. Corresponding H_2 and CO yields are exhibited in Figures S1 and S2, respectively.

Among the investigated catalysts, SiO_2 -supported catalysts presented exceptional activity and stability regardless of the C-promotion effect. All investigated catalysts showed an increasing trend of feed gas conversion with increasing temperature. For example, the initial CH_4 conversion for Ni-C/ SiO_2

catalyst was increased from 44% at 650 °C to 91% at 850 °C. The deactivation rate of non-doped and C-doped Ni/SiO₂ catalysts was high at low temperatures. Ni-based catalysts are substantially active from 600 °C to 750 °C to decompose methane and produce C-deposits ($\text{CH}_4 \rightarrow 2\text{H}_2 + \text{C}$, $\Delta H = 74.5 \text{ kJ/mol}$) [20]. Throughout this process, side reaction ($\text{C} + \text{CO}_2 \rightarrow 2\text{CO}$) might not be well executed at low reaction temperatures and resulted in the production of graphitic carbon species, which block the active sites from the reaction medium. The high graphitic carbon deposition at 650 °C over Ni-based catalysts was confirmed via XRD analysis, as shown later. This phenomenon subsequently led to gradual deactivation. By contrast, the advanced stability of Ni-C/SiO₂ was observed at 850 °C, with 91% initial methane conversion and 87% conversion after 150 min. The low deactivation rate might be due to the high consumption of accumulated carbon by CO₂ to form CO. Ni/SiO₂ converted feed gas at a slightly lower rate than Ni-C/SiO₂ at 850 °C; however, the trend was upheld. The promotion effect of C on Ni/SiO₂ was highly noticeable at 650 °C and 750 °C. Similar to CH₄ conversion, CO₂ conversion also maintained a similar trend with slightly high percent conversion, as shown in Figure 2. The reverse water gas shift ($\text{H}_2 + \text{CO}_2 \rightarrow \text{H}_2\text{O} + \text{CO}$, $\Delta H = 41.1 \text{ kJ/mol}$) and reverse Boudouard ($\text{CO}_2 + \text{C} \rightarrow 2\text{CO}$) could be the reason for the high CO₂ conversion compared with CH₄ conversion. The presence of water in the cold trap during reaction also clearly signposted the occurrence of reverse water–gas shift reaction [21].

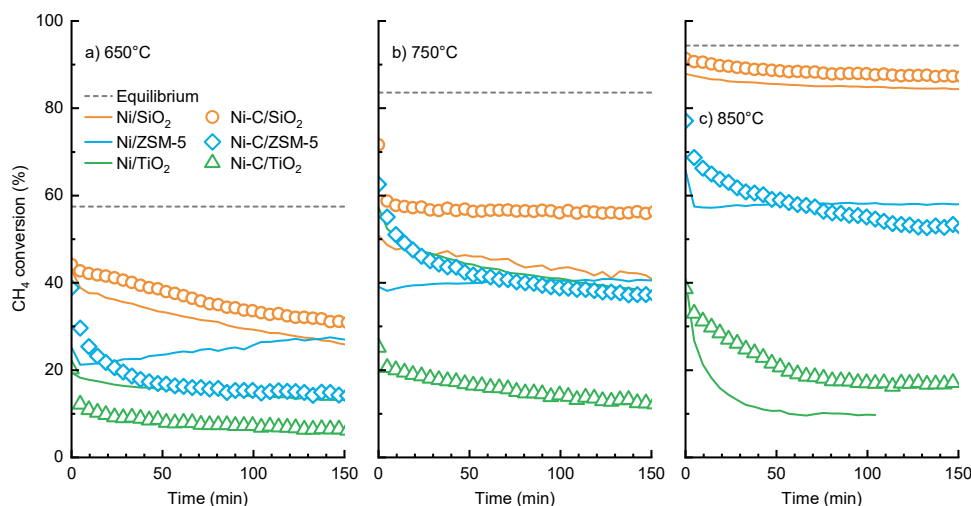


Figure 1. CH₄ conversion in DRM (dry reforming of methane) with prepared catalysts at different temperatures. (a) 650 °C, (b) 750 °C, (c) 850 °C

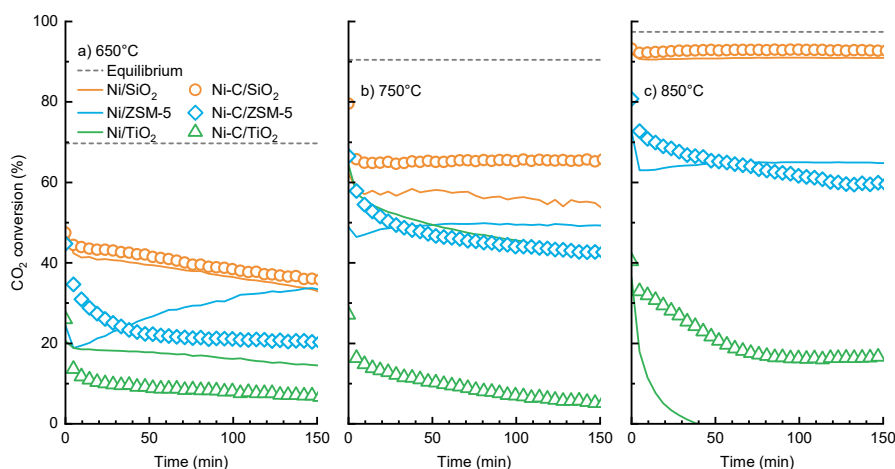


Figure 2. CO₂ conversion in DRM with prepared catalysts at different temperatures. (a) 650 °C, (b) 750 °C, (c) 850 °C

The downward inclination of the H_2/CO ratio at low temperature in Figure S3a was due mainly to the occurrence of reverse water–gas shift. This result could be attributed to the endothermic nature of reverse water–gas shift compared with that of DRM ($CH_4 + CO_2 \rightarrow H_2 + CO$, $\Delta H = 247$ kJ/mol) [22]. High temperature favors a strong endothermic dry reforming reaction. It also favors endothermic CH_4 decomposition and exothermic water–gas shift reaction ($H_2O + CO \rightarrow H_2 + CO_2$, $\Delta H = -41.1$ kJ/mol) and subsequently increases the amount of H_2 . The $H_2:CO$ ratio was always below unity, which confirmed the existence of methane decomposition and Boudouard reactions. However, Ni-C/SiO₂ catalyst controlled those demoting reactions and maintained an $H_2:CO$ ratio of 0.8 at 850 °C (Figure S3c). Irrespective of the declining activity of Ni/SiO₂ catalyst at 650 °C and 750 °C, Ni/ZSM-5 exhibited stable conversion after a slight drop from the initial conversion at all experimented temperatures. This finding could be attributed to the fast balance of production and consumption of carbon deposition. The total carbon balance throughout process was close to 100, which is exhibited in Figure S4. Compared with that of SiO₂-supported catalysts, feed conversion was lower for ZSM-5- and TiO₂-supported ones. The addition of C improved the initial activity of Ni/ZSM-5, but failed to maintain stability and caused fast deactivation. The performance of the TiO₂-supported catalyst was poor compared to others considered in this study, and the addition of C had further decreased the performance of Ni/TiO₂ at 650 and 750 °C (Figure 2a,b). The catalytic performance of Ni/TiO₂ at 850 °C was lower than that at 750 °C, and this might be attributed to the oxidation of Ni active sites and the sintering of Ni particles at high temperature, which happened due to their weak metal-support interaction. The slightly high catalytic performance of Ni-C/TiO₂ at 850 °C than that of Ni/TiO₂ might be due to the combined contributions of glucose-derived carbon and the endothermic nature of DRM.

2.2. Physicochemical Characteristics of the Catalysts

The reducibility of the developed catalysts, metal-support interaction, and influence of the promoter on metal-support interaction were investigated using H_2 -TPR (temperature programmed reduction) measurements. The H_2 -TPR profiles of investigated catalysts are exhibited in Figure 3.

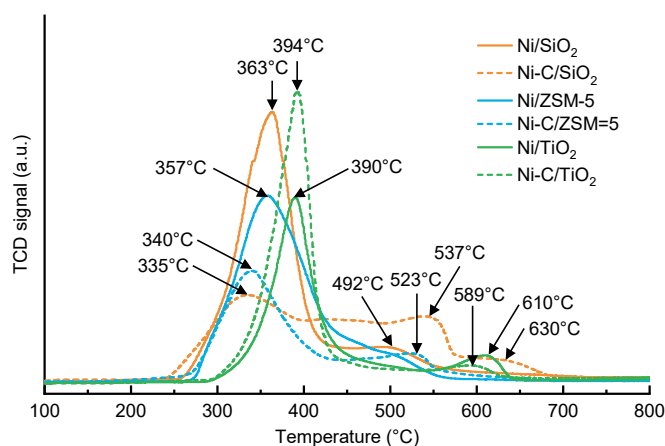


Figure 3. H_2 -TPR profiles of examined catalysts.

The distinctive effect of doped C on NiO reduction and metal-support interaction was indicated by the changes in the TPR profiles. A reduction band in the temperature range of 300–450 °C, typically assigned to the reduction of nickel oxide or Ni^{2+} species without or with low interaction with the support [23], was exhibited by all investigated catalysts. The reduction of Ni/SiO₂ occurred in two stages. The intense low-temperature hydrogen consumption peak centered at 363 °C with a shoulder at 342 °C was attributed to the reduction of weakly or non-interacted NiO species. The second low intense shoulder peak with a maximum at 492 °C indicated the reduction of NiO having intermediate interaction with the support. Earlier studies explicitly support the complete reduction of Ni/SiO₂ between 300 °C and 600 °C [24]. The extended second shoulder peak beyond 600 °C might be attributed

to the low quantity of NiO having strong interaction with the support [25]. The presence of C had a huge effect on the Ni–SiO₂ interaction. Ni–C/SiO₂ was reduced in three stages. The low-temperature reduction peak shifted to a much low temperature with a maximum at 335 °C and severely reduced the intensity. Two shoulder peaks, which indicated a strong metal-support interaction, were observed above 500 °C. The low intense high-temperature shoulder peak between 600 °C and 630 °C was noted as the highest temperature peak among investigated catalysts, thereby confirming the highest metal-support interaction in Ni–C/SiO₂. The results explicitly indicated that Ni species were well dispersed over SiO₂ in the presence of C.

The low-temperature broad reduction band of Ni/ZSM-5 with a peak centered at 357 °C depicted the presence of Ni-species lightly or not bounded with ZSM-5 and/or positioned in the supercages, cavities, and/or channels of ZSM-5. The addition of C lowered the intensity of low-temperature peaks. However, a newly generated high-temperature peak with a maximum at 523 °C vividly portrayed the slightly improved Ni–zeolite interaction. Considering the reduction profiles of Ni–C/SiO₂ and Ni–C/ZSM-5, we could assume that Ni was supported over the surface of SiO₂ and ZSM-5 and on the surface of the promoter C, thereby proving the better metal-support interaction. Among the non-doped catalysts, Ni/TiO₂ showed a high-temperature low-intense reduction peak centered at 610 °C, which could be assigned to the significant interaction of Ni²⁺ with TiO₂. However, the incorporation of C lowered the intensity of high-temperature reduction peaks and increased the intensity of low-temperature peak centered at 394 °C. This finding revealed the easy reduction and lowered Ni–TiO₂ interaction upon C-addition and could be attributed to the pre-filling of pores of TiO₂ with C during impregnation that caused aggregation of bulk Ni-species over the surface of TiO₂. These assumptions were also confirmed by the STEM-EDS elemental scanning results shown later.

The textural properties of all nickel catalysts and bare supports were evaluated by nitrogen adsorption-desorption isotherms. Isotherms are shown in Figure 4, and the physicochemical characteristics obtained from N₂ adsorption-desorption isotherms and XRD patterns (Figure 5) are presented in Table 1. The commonly exhibited type II isotherms were presented by Ni-based catalysts following International Union of Pure and Applied Chemistry (IUPAC) classification [26]. However, the different supports exhibiting diverse hysteresis loops might be attributed to the different pore structures.

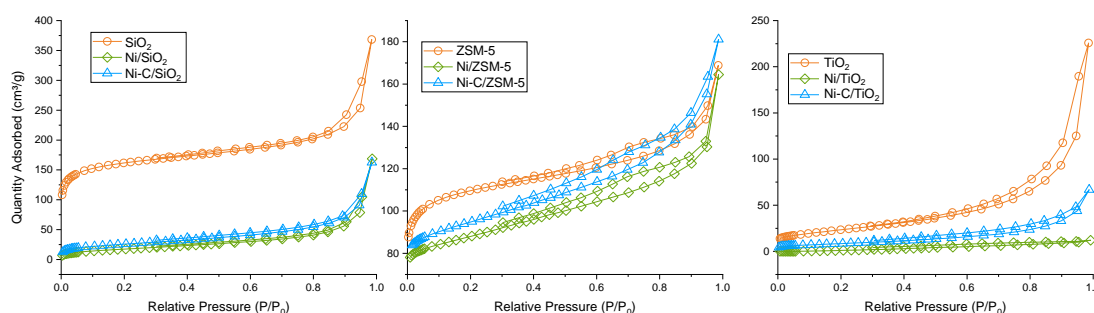


Figure 4. N₂ adsorption-desorption isotherms of examined catalysts.

As seen in Figure 4, SiO₂ exhibited type II isotherms with an H3-H4 hysteresis loop, thereby indicating a meso-macroporous structure. The sharp increase in adsorption amount from relative pressure = 0.7 might be attributed to the fairly narrow pore size distributions, which was further confirmed from the pore-size distribution curve in Figure S5. The figure also indicated that the pore size distributions were mainly distributed in a region of >25 nm diameter (meso-macroporous-region). Impregnation of Ni decreased the width of the hysteresis loop to a likely H4, indicating a decrease in the amount of N₂ adsorption. This meant the destruction of the mesoporous structure by the anchored Ni particles, which resulted in low surface area and total pore volume (Table 1) [27]. In addition, the hysteresis loop indicated a high pore size uniformity, as shown in Figure S5. The addition of C improved the surface area of Ni/SiO₂, which designated the inhibition of Ni-particle agglomeration in

the presence of C. In short, the doped C improved the overall surface characteristics and metal-support interaction of Ni/SiO₂ (Table 1). The catalytic performance of Ni-C/SiO₂ was higher compared with that of Ni/SiO₂ due to its improved surface characteristics, higher dispersion, and metal-support interaction. Similar to SiO₂, TiO₂ exhibited type I isotherms with H4 hysteresis loops. The incorporation of Ni largely diminished its surface area from 86 m²/g to 4 m²/g, whereas the addition of C improved the surface area to 31 m²/g. This higher surface area might be attributed to the similar doped C effect in Ni-C/SiO₂. Figure 4 also shows the isotherms of free ZSM-5, Ni/ZSM-5, and Ni-C/ZSM-5. The isotherm with a high adsorption volume at a relative pressure of 0.1 specifically indicated the existence of the micropores in the zeolites [28]. The rectangular H4 hysteresis loop identified at a high relative pressure (above 0.5) corresponded to the mesopores in the zeolite. The impregnation of Ni and Ni-C eliminated the microporosity, whereas the hysteresis loop was not altered. The impregnation of Ni reduced the total surface area, whereas pore volume remained intact. Furthermore, the BET surface area of the C-doped Ni/ZSM-5 was slightly higher than that of the non-doped catalyst, and the former subsequently possessed higher initial catalytic activity than the later.

Table 1. Textural characteristics of the reduced and spent catalysts.

Sample	S _{BET} (m ² /g)	Pore Volume (cm ³ /g)	Average Pore Diameter (nm)	Crystal Size (nm)		
				Fresh	DRM-650	DRM-850
SiO ₂	463	0.57	3.80	—	—	—
Ni/SiO ₂	65	0.26	3.06	33.5 ☆	27.4 ☆	26.6 ☆
				16.9 ★	15.2 ★	23.3 ★
				6.4 ☆	— ☆	7.6 ☆
Ni-C/SiO ₂	92	0.25	3.42	— ★	7.2 ★	7.0 ★
				—	—	—
ZSM-5	361	0.26	3.83	—	—	—
Ni/ZSM-5	288	0.25	3.43	22.8 ☆	24.4 ☆	22.9 ☆
				14.5 ★	14.2 ★	16.9 ★
				26.9 ☆	31.6 ☆	24.6 ☆
Ni-C/ZSM-5	311	0.28	3.07	16.9 ★	14.4 ★	22.7 ★
				—	—	—
TiO ₂	86	0.35	3.39	—	—	—
Ni/TiO ₂	4	0.19	3.05	23.8 ☆	29.5 ☆	30.3 ☆
				15.7 ★	— ★	— ★
Ni-C/TiO ₂	31	0.11	3.07	34.2 ☆	29.1 ☆	30.7 ☆
				— ★	— ★	— ★

☆ based on the Ni⁰ diffraction peak. ★ based on NiO diffraction peak. DRM: dry reforming of methane.

The crystalline structure of catalysts, the size of Ni particles, and their alteration upon DRM were clarified from X-ray diffraction patterns. Figure 5 depicts the recorded XRD patterns. Average Ni crystallite size was estimated from diffraction peaks at $2\theta = 44.6^\circ$, 51.9° , and 76.8° . The addition of C to Ni/SiO₂ reduced its average Ni-crystallite size from 33.52 nm to 16.89 nm, thereby indicating that C promoted the widespread dispersion of Ni over SiO₂. These results were consistent with the findings in pore structure and H₂-TPR analyses. Slightly intense NiO phases were found in Ni/SiO₂ diffraction pattern as identified by the peaks centered at $2\theta = 37.4^\circ$, 43.5° , and 63.2° , designating small quantity of incompletely reduced NiO at 850 °C. This finding was supported by the extended shoulder peak of Ni/SiO₂ in the TPR profile (Figure 3). However, NiO diffraction peaks were not found in the Ni-C/SiO₂ diffraction pattern. It might be because of an easy NiO reduction or its high dispersion in the presence of glucose, rendering the XRD detection difficult. At the same time, the reappearance of NiO peaks upon DRM at 850 °C indicated the agglomeration of highly dispersed NiO and enabled its XRD detection. The high degree of Ni-dispersion in the presence of C resulted in the high initial activity of Ni-C/SiO₂ (Figures 1 and 2). The less intense XRD peaks observed with Ni-C/SiO₂ might be attributed to low crystallinity and good dispersion upon C addition. The comparable Ni-crystallite sizes in Table 1 before and after DRM clearly eliminated the possibility of particle agglomeration at the high-temperature reaction. Thus, catalyst deactivation owing to particle agglomeration could be excluded. Furthermore, a noticeable graphitic carbon peak could be found after DRM at 650 °C (as seen in peaks centered at $2\theta = 26.4^\circ$). The fast catalyst deactivation of Ni supported over SiO₂

could be attributed to this high carbon deposit (Figure 1). Thus, the deposition of carbon atoms either destabilized the adsorption capacity of clean active catalyst phases or hindered it from reacting with feed gases. However, the peaks for carbon were absent after DRM at 850 °C due to very low or negligible carbon deposition. In addition to the diffraction peaks that corresponded to Ni-phases, the diffraction peaks corresponded to the NiO phases became evident after DRM for Ni/SiO₂ and Ni-C/SiO₂, especially at 850 °C. This result indicated the existence of non-reduced NiO phases even after reaction or reoxidization at the high temperature. The H₂-TPR and XRD results concisely validated the high activity and stability of Ni-C/SiO₂ at high temperatures during the entire analysis (Figures 1 and 2). Compared to Ni/SiO₂, Ni/ZSM-5 presented fairly similar diffraction peaks in the presence of added C. By contrast, the diffraction intensity of Ni/TiO₂ was reduced upon C-addition. Furthermore, NiO and/or Ni crystal sizes were increased after C-addition, thereby indicating the low effect of C on Ni-dispersion in ZSM-5 and TiO₂ supports. The presence of NiO peaks in Ni/ZSM-5 samples after reduction at 850 °C might be attributed to the difficulty in reducing the deeply placed Ni-particles at internal cavities of ZSM-5. Furthermore, the comparable H₂-TPR profiles and XRD patterns of ZSM-5 supported samples indicated the neutral influence of C on Ni/ZSM-5. These results revealed that C played an inverse effect on the characteristics of Ni/TiO₂. The neutral and negative influences of C on the physicochemical characteristics of Ni/ZSM-5 and Ni/TiO₂ were evident in the similar and low catalytic performance of Ni-C/ZSM-5 and Ni-C/TiO₂ (Figures 1 and 2), respectively. The higher initial catalytic activity of Ni-C/ZSM-5 than that of Ni/ZSM-5 might be attributed to the slightly high Ni dispersion in the presence of C, which was confirmed by the slightly less intense XRD peaks and H₂-TPR profile.

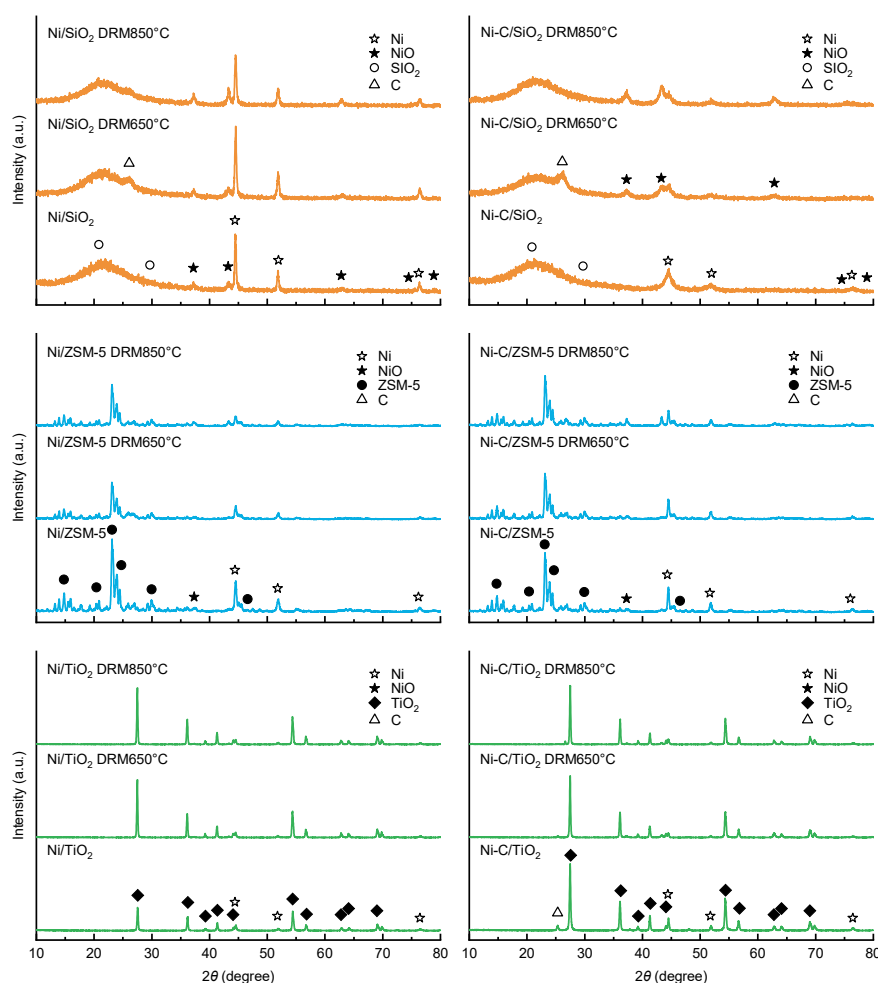


Figure 5. XRD diffraction patterns of examined catalysts.

EXAFS analyses were conducted to confirm the characteristics of catalysts before and after DRM. EXAFS profiles are shown in Figure 6. The EXAFS profile of Ni-C/SiO₂ clearly followed the Ni-foil profile, thereby indicating complete reduction as confirmed with XRD patterns in Figure 5. However, Ni/SiO₂ analogous to Ni-foil was attributed to the presence of non-reduced NiO phases. In addition, NiO peaks became prominent after DRM. The declined intensity was credited to the abridged size of the supported Ni particle. The EXAFS patterns of Ni-catalysts supported over ZSM-5 and TiO₂ also clearly supported the described H₂-TPR and XRD results.

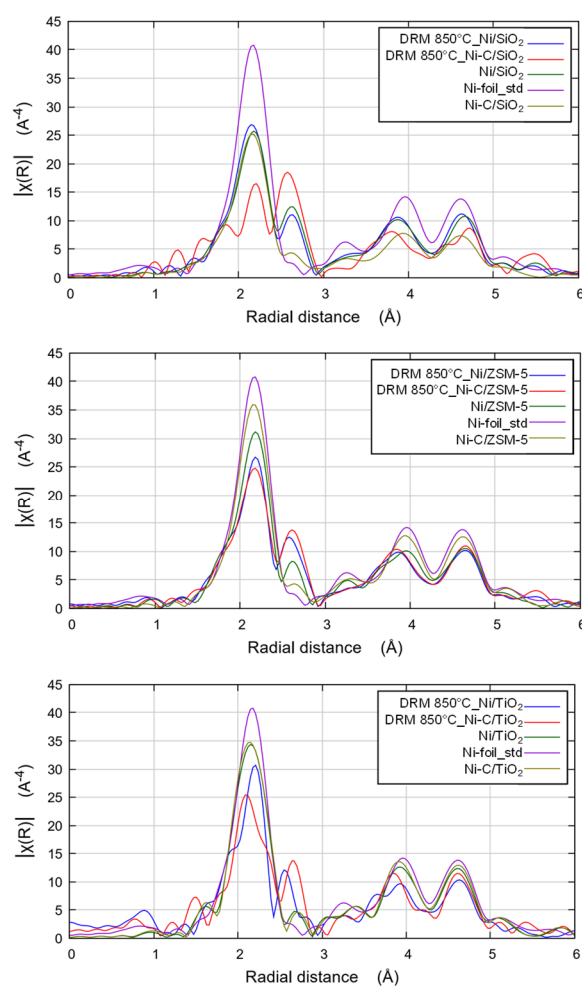


Figure 6. EXAFS profiles of examined catalysts before and after DRM at 850 °C.

Given that XRD confirmed the existence of produced carbon after DRM, the nature and stability of as-produced carbon were confirmed with TGA (thermogravimetric analysis) under an air atmosphere. TGA traces of catalysts before and after DRM at 650 °C and 850 °C are shown in Figure S6. In general, the weight loss of fresh non-doped catalysts below 500 °C was attributed to the desorption of binder gas vapors inside the pores. The successive weight gain was due to oxidation of reduced Ni to NiO in the presence of O₂. However, the weight loss exhibited by the C-supported catalyst after 500 °C was due to the removal of C with O₂. The less intense C-removal of Ni-C/SiO₂ indicated its higher interaction with the materials compared with that of Ni-C/ZSM-5, thereby supporting XRD and TPR results. Similarly, the spent catalysts exhibited similar weight loss after 500 °C based on the extent of C-deposition during DRM. The least weight loss was exhibited by the spent catalyst at 850 °C, as shown in Figure 7, pointing out its low C-deposit, which was in good agreement with previously discussed results. The removal of deposited C together with in-situ present C in catalysts might be the reason for their high weight loss observed with C-doped catalysts. The TGA results explicitly proved

that C-doping did not improve the C-deposition resistance of Ni/SiO₂, but enhanced its stability and activity. Irrespective of the behavior of the SiO₂- and ZSM-5-supported catalysts, the spent Ni/TiO₂ showed a weight gain that indicated Ni oxidation and no carbon deposition. These results effectively validated the XRD results.

Figure 8 reveals that the addition of glucose effectively eliminated the Ni-agglomeration tendency. The bright spots in Figure 8a indicate the agglomerated Ni-species, whereas such agglomerations are absent in Figure 8b, exhibiting a homogeneous distribution of Ni. These phenomena resulted in high catalytic performance (Figures 1 and 2). However, the incorporation of C in Ni/ZSM-5 catalyst did not significantly change the Ni-agglomeration (Figure S7), thereby reflecting the similar catalytic performance of Ni/ZSM-5 and Ni-C/ZSM-5 catalysts. Different from the effect of glucose on Ni/SiO₂ and Ni/ZSM-5, extensive agglomeration occurred for Ni/TiO₂ and resulted in fast deactivation during DRM. This finding might be attributed to the strong interaction between C and TiO₂, which consecutively resulted in high Ni-aggregation.

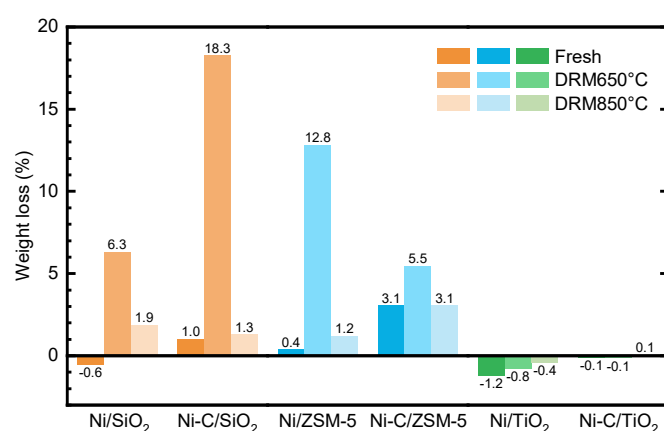


Figure 7. Weight loss calculated from TGA trace.

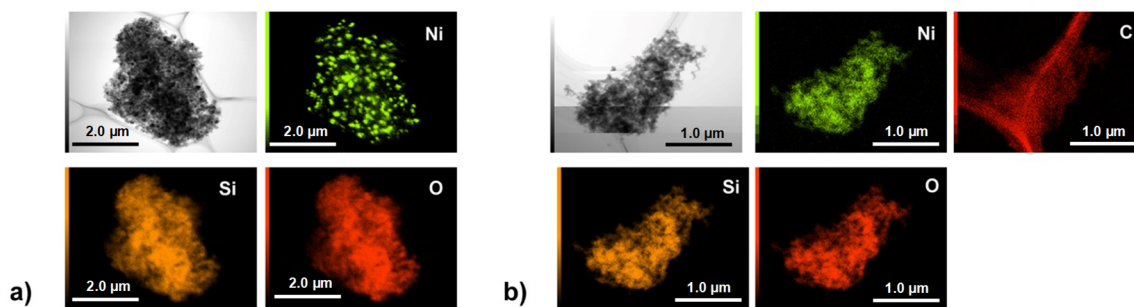


Figure 8. TEM-EDS elemental mapping images of fresh catalysts: (a) Ni/SiO₂ and (b) Ni-C/SiO₂.

2.3. Stability Test

Stability tests were conducted for Ni/SiO₂ and Ni-C/SiO₂ at 750 °C. CH₄ and CO₂ conversions are exhibited in Figure 9.

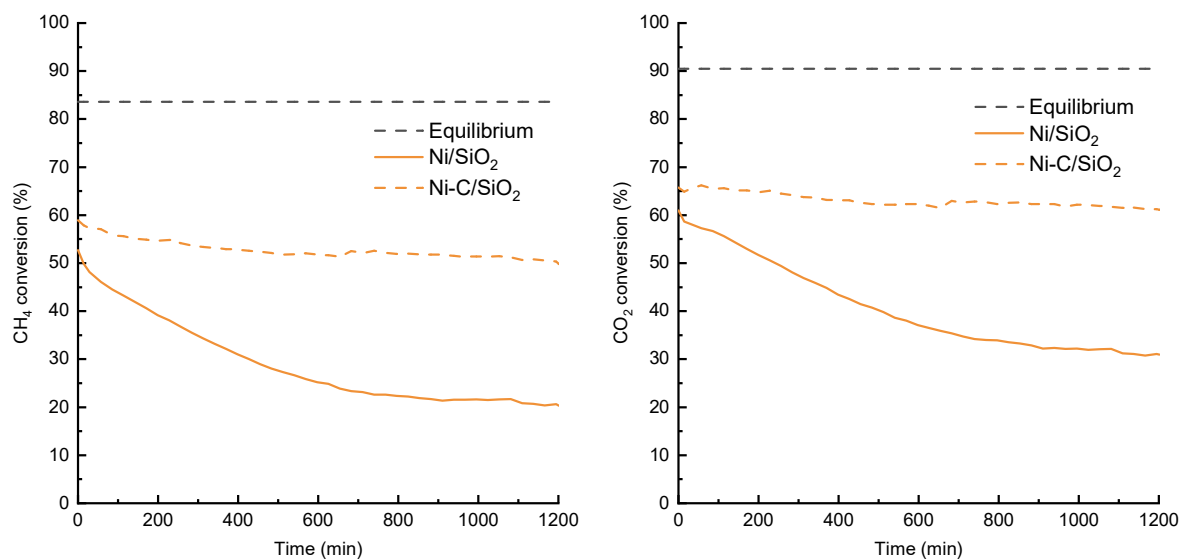


Figure 9. CH₄ and CO₂ conversion during the stability test of Ni/SiO₂ and Ni-C/SiO₂ at 750 °C.

A huge deactivation was exhibited by Ni/SiO₂ during the test time of 20 h. However, greater stability was given by Ni-C/SiO₂ in similar experimental conditions with a drop of 8% from an initial CH₄ conversion of 59%. Contrary to previous research results, carbon deposition was not a reason for the slight or high deactivation of Ni-C/SiO₂ or Ni/SiO₂, respectively, at 750 °C. Thus, no significant carbon deposition was observed in elemental mapping, as shown in Figure 9. These results were further confirmed by TGA results (Figure S8). Hence, the observations concluded that the most of carbon species produced over Ni-based catalysts at 750 °C and 850 °C were active and readily reacted with CO₂ to produce CO. The high deactivation of Ni/SiO₂ could be attributed to the Ni-particle agglomeration at high temperatures. Heavy Ni aggregations are shown in Figure 10a. The minor deactivation of Ni-C/SiO₂ might be attributed to the slight Ni-sintering upon the gradual removal of glucose-derived carbon under the CH₄-CO₂ stream at 750 °C.

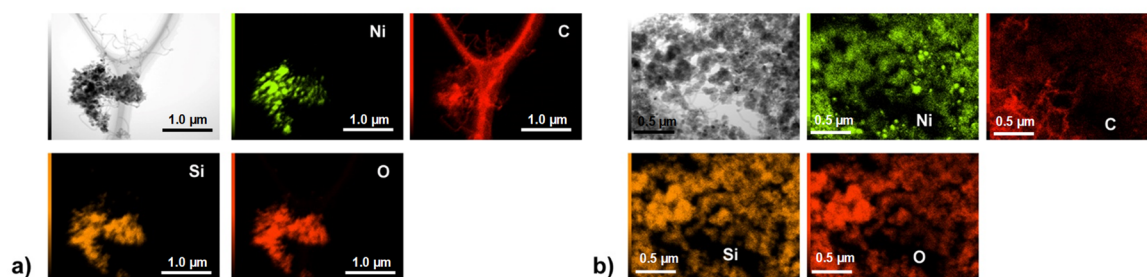


Figure 10. STEM-EDS elemental mapping images of catalysts after stability test at 850 °C: (a) Ni/SiO₂, and (b) Ni-C/SiO₂.

3. Materials and Methods

3.1. Catalyst Preparation

Analytical grade chemicals were used for catalyst synthesis. The support SiO₂ (nanopowder, 5–15 nm particle size) and TiO₂ anatase (nanopowder, <25 nm particle size) were purchased from Aldrich (St. Louis, MO, USA) and ZSM-5 (CBV 3024E) from Zeolyst International (Kansas, MO, USA). Specific surface characteristics of supports are given in Table 1. D-(+)-glucose and Ni precursor Ni(NO₃)₂·6H₂O were purchased from Wako (Osaka, Japan). Ni-supported catalysts were synthesized by a general impregnation method, and their C-doped samples were prepared in a similar manner with glucose as the precursor. In brief, 0.004 mol Ni(NO₃)₂·6H₂O was dissolved in 25 mL of deionized

water and added to a solution of 0.04 mol support (2.5 g ZSM-5, in specific) that was dispersed in 40 mL of deionized water. The solution was stirred for 2 h at room temperature, and then water was removed using a rotary evaporator operated for 4 h at 65 °C. After evaporation, the samples were air-dried overnight at 100 °C and calcined at 850 °C for 5 h under air. The prepared samples were denoted as Ni/SiO₂, Ni/ZSM-5, and Ni/TiO₂. For the C-doped catalysts, 0.004 mol glucose was added to the solution in the impregnation, and the dried sample was heated under N₂ flow at 850 °C for 5 h. C-doped catalysts were named Ni-C/SiO₂, Ni-C/ZSM-5, and Ni-C/TiO₂.

3.2. Dry Reforming of Methane

The as-synthesized catalysts were initially pelletized and crushed to a size range of 150–212 µm to avoid the possibility of diffusion resistance during DRM. The 100 mg of crushed catalyst was mixed with 200 mg of quartz sand (150–212 µm). The quartz sand was used to maintain a uniform catalyst bed temperature and excludes heat and mass transport limitations. The catalytic performance was examined in a fixed bed quartz reactor (i.d. 8 mm). The mixed catalyst sample was loaded and packed in the reactor using two quartz wool plugs. A thermocouple (K Class 2 sheathed with SUS316) was loaded inside the quartz reactor to have contact with the catalyst bed. The metallic contents in the thermocouple were not contributed to DRM catalysis, which was confirmed via blank experiments. The quartz reactor was placed in a three-zone heating furnace. Kofloc mass flow controllers were used to control the gas flow rate. The reactor was flushed with N₂ (100 mL/min) and heated to 850 °C with a ramp of 10 °C/min under N₂ flow. N₂ stream was replaced by 45% H₂ balanced with N₂ to reduce the calcined catalyst sample for 2 h at 850 °C. The reactor was then cleaned thoroughly with N₂ flush after reduction and heated/cooled to the temperature of the DRM test. N₂ was replaced by a reactant stream (25%CH₄-25%CO₂-50%N₂) with a flow rate that corresponded to a space velocity of 8570 h⁻¹. Activity tests were conducted at 650 °C, 750 °C, and 850 °C for 150 min. Long term stability tests for 20 h were conducted for selected catalysts at 750 °C. All the effluents were analyzed online with Agilent 490 micro- Gas Chromatography (Santa Clara, CA, USA) equipped with a thermal conductivity detector. Two sets of ice traps were used to remove water vapors produced by reverse water-gas shift reaction before entering to micro-GC.

3.3. Characterization

The textural parameters of synthesized catalysts were examined by measurement of N₂ adsorption-desorption isotherms using a Quantachrome Nova 3200e at -196 °C. Samples were degassed at 300 °C for 5 h prior to the measurement. The specific surface areas were calculated according to the BET method, whereas the pore size distributions and pore volume were derived from the BJH method using the desorption branch of the isotherms. A scanning electron microscopy (STEM) observation was performed with a JEOL (Tokyo, Japan), JEM-2100F, with an accelerating voltage of 200 kV. Energy-dispersive X-ray spectrometry (EDS) mapping was performed with a JEOL, JED-2300T analyzer. The sample was initially crushed, ground, and dispersed in ethanol under 30 min ultrasonic agitation. A drop of the suspension was then transferred to a carbon-coated Cu mesh grid and dried at room temperature for STEM-EDS observation. Rigaku TTR-III X-ray diffractometer instrument (Tokyo, Japan) was used to record the XRD patterns of reduced catalysts before and after DRM tests. The intensity was measured by step scanning in the 2θ range of 5–80° with a step of 0.02° and a scan rate of 0.016°/s. The average crystallite size was calculated with the Scherrer equation.

Temperature-programmed reduction (H₂-TPR) measurements were conducted using a Micromeritics TPR 2720 analyzer (Norcross, GA, USA). In brief, a total of 0.05 g of catalyst was placed in a U-tube holder and cleaned at 550 °C for 60 min by flushing with helium gas. After cooling to room temperature, the reductive gas mixture, which comprised of 5% hydrogen and 95% nitrogen at a flow rate of 20 mL/min, was streamed through the sample, and then the catalyst bed was heated up to 800 °C with a heating rate of 10 °C/min to obtain the TPR profiles. Extended X-ray absorption

fine structure (EXAFS) measurements were conducted at a Beamline (SAGA-LS/BL-06) of Kyushu Synchrotron Light Research Center, Japan.

The quantification of accumulated carbon was conducted by the thermogravimetric analyzer (TGA) using a Hitachi STA 7200 (Tokyo, Japan). The fresh and spent catalysts (5 mg) were heated from 100 to 850 °C with a heating rate of 10 °C/min in air atmosphere. Total weight loss was estimated according to a reported method [29].

4. Conclusions

In this research, we investigated the catalytic characteristics of Ni-based catalysts in DRM and the impact of C-doping on their catalytic performance. SiO₂, ZSM-5, and TiO₂-supported Ni-catalysts were synthesized and modified with doping of glucose-derived. Ni-C/SiO₂ presented the highest catalytic performance in DRM to produce syngas. The characterization results confirmed the efficient incorporation of Ni into the pores of SiO₂ in the presence of C, which provided better surface area, smaller particle size, and pore size distribution to Ni/SiO₂. The improved characteristics enabled an enhanced catalytic performance with no or less carbon deposition at high temperatures (e.g., 850 °C). The increased reduction temperature of Ni-C/SiO₂ in the TPR profile signposted the strong Ni interaction with SiO₂ in the presence of C, which was superior to all other investigated catalysts. Hence, this result proved that low-cost carbon derived from glucose could enhance Ni-dispersion in SiO₂ even without doping of promoter metals. However, no significant improvement in the Ni-dispersion was observed with ZSM-5 support in the presence of doped C. The C-doping to Ni/TiO₂ resulted in larger Ni particle size, low Ni-dispersion, and weak metal-support interaction. The stability and resistance to C-accumulation capability exhibited by Ni-C/SiO₂ during stability test implied its capability to be a potential candidate for commercial dry reforming of methane application to produce syngas and hydrogen.

Supplementary Materials: The following are available online at <http://www.mdpi.com/2073-4344/10/1/21/s1>, Figure S1: H₂ yield at (a) 650 °C, (b) 750 °C, and (c) 850 °C, Figure S2: CO yield at (a) 650 °C, (b) 750 °C, and (c) 850 °C, Figure S3: H₂:CO ratio at (a) 650 °C, (b) 750 °C, and (c) 850 °C, Figure S4: Carbon balance at (a) 650 °C, (b) 750 °C, and (c) 850 °C, Figure S5: BJH pore size distributions (a) SiO₂, (b) ZSM-5, and (c) TiO₂-supported Ni-catalysts, Figure S6: TGA profile of catalysts before and after DRM. (a) Ni/SiO₂, (b) Ni-C/SiO₂, (c) Ni/ZSM-5, (d) Ni-C/ZSM-5, (e) Ni/TiO₂, and (f) Ni-C/TiO₂, Figure S7: STEM-EDX images and elemental distribution of catalysts before DRM, Figure S8: Comparison of weight loss (%) calculated from TGA trace.

Author Contributions: Conceptualization, U.A.; methodology, U.A., E.H., J.-i.H.; characterization, U.A., S.A., S.K.; investigation, U.A., S.K., E.H., J.-i.H.; writing—original draft preparation, U.A., S.A.; writing—review and editing, S.K., D.P.M., S.A., E.H., J.-i.H.; supervision, J.-i.H.; funding acquisition, S.K., J.-i.H. All authors have read and agreed to the published version of the manuscript.

Funding: This work was supported by the Japan Society for the Promotion of Science (JSPS) for a Challenging Research (Pioneering) (17H06225). The authors are grateful to the Cooperative Research Program of the Network Joint Research Center for Materials and Devices that have been supported by the Ministry of Education, Culture, Sports, Science, and Technology (MEXT), Japan.

Acknowledgments: Authors would like to thank Yasuyo HACHIYAMA, Asuka MORI, and Kentaro SHIMA for their technical support. The administrative support from Naoko SUDO is highly appreciated. UPMA specially thank Ni'mah Ayu LESTARI and Nurulhuda HALIM for their support in TGA characterization.

Conflicts of Interest: The authors state no conflict of interest.

References

1. NASA. NOAA Data Show 2016 Warmest Year on Record Globally; NASA: Washington, DC, USA, 2017.
2. Ashik, U.P.M.; Wan Daud, W.M.A.; Hayashi, J.-i. A review on methane transformation to hydrogen and nanocarbon: Relevance of catalyst characteristics and experimental parameters on yield. *Renew. Sustain. Energy Rev.* **2017**, *76*, 743–767. [CrossRef]
3. Full Mauna Loa CO₂ Record; ESRL Global Monitoring Division, Global Greenhouse Gas Reference Network: Boulder, CO, USA, 2018.

4. *Trends in Atmospheric Methane*; ESRL Global Monitoring Division, Global Greenhouse Gas Reference Network: Boulder, CO, USA, 2018.
5. Gasser, T.; Kechiar, M.; Ciais, P.; Burke, E.J.; Kleinen, T.; Zhu, D.; Huang, Y.; Ekici, A.; Obersteiner, M. Path-dependent reductions in CO₂ emission budgets caused by permafrost carbon release. *Nat. Geosci.* **2018**, *11*, 830–835. [\[CrossRef\]](#)
6. Shindell, D.; Faluvegi, G.; Seltzer, K.; Shindell, C. Quantified, localized health benefits of accelerated carbon dioxide emissions reductions. *Nat. Clim. Chang.* **2018**, *8*, 291–295. [\[CrossRef\]](#) [\[PubMed\]](#)
7. Zain, M.M.; Mohamed, A.R. An overview on conversion technologies to produce value added products from CH₄ and CO₂ as major biogas constituents. *Renew. Sustain. Energy Rev.* **2018**, *98*, 56–63. [\[CrossRef\]](#)
8. Akiyama, T.; Oikawa, K.; Shimada, T.; Kasai, E.; Yagi, J.-I. Thermodynamic Analysis of Thermochemical Recovery of High Temperature Wastes. *ISIJ Int.* **2000**, *40*, 286–291. [\[CrossRef\]](#)
9. Abe, K.; Saito, G.; Nomura, T.; Akiyama, T. Limonitic Laterite Ore as a Catalyst for the Dry Reforming of Methane. *Energ. Fuel* **2016**, *30*, 8457–8462. [\[CrossRef\]](#)
10. Bradford, M.C.J.; Vannice, M.A. CO₂ Reforming of CH₄. *Catal. Rev.* **1999**, *41*, 1–42. [\[CrossRef\]](#)
11. Wang, Z.; Cao, X.M.; Zhu, J.; Hu, P. Activity and coke formation of nickel and nickel carbide in dry reforming: A deactivation scheme from density functional theory. *J. Cat.* **2014**, *311*, 469–480. [\[CrossRef\]](#)
12. Ruckenstein, E.; Wang, H.Y. Carbon Deposition and Catalytic Deactivation during CO₂ Reforming of CH₄ over Co/γ-Al₂O₃ Catalysts. *J. Cat.* **2002**, *205*, 289–293. [\[CrossRef\]](#)
13. Nagaoka, K.; Takanabe, K.; Aika, K.-I. Influence of the reduction temperature on catalytic activity of Co/TiO₂ (anatase-type) for high pressure dry reforming of methane. *Appl. Catal. A-Gen.* **2003**, *255*, 13–21. [\[CrossRef\]](#)
14. Ewbank, J.L.; Kovarik, L.; Kenvin, C.C.; Sievers, C. Effect of preparation methods on the performance of Co/Al₂O₃ catalysts for dry reforming of methane. *Green Chem.* **2014**, *16*, 885–896. [\[CrossRef\]](#)
15. Myint, M.; Yan, B.; Wan, J.; Zhao, S.; Chen, J.G. Reforming and oxidative dehydrogenation of ethane with CO₂ as a soft oxidant over bimetallic catalysts. *J. Cat.* **2016**, *343*, 168–177. [\[CrossRef\]](#)
16. Budiman, A.W.; Song, S.-H.; Chang, T.-S.; Shin, C.-H.; Choi, M.-J. Dry Reforming of Methane Over Cobalt Catalysts: A Literature Review of Catalyst Development. *Catal. Surv. Asia* **2012**, *16*, 183–197. [\[CrossRef\]](#)
17. Horiuchi, T.; Sakuma, K.; Fukui, T.; Kubo, Y.; Osaki, T.; Mori, T. Suppression of carbon deposition in the CO₂-reforming of CH₄ by adding basic metal oxides to a Ni/Al₂O₃ catalyst. *Appl. Catal. A-Gen.* **1996**, *144*, 111–120. [\[CrossRef\]](#)
18. Daza, C.E.; Gallego, J.; Mondragón, F.; Moreno, S.; Molina, R. High stability of Ce-promoted Ni/Mg–Al catalysts derived from hydrotalcites in dry reforming of methane. *Fuel* **2010**, *89*, 592–603. [\[CrossRef\]](#)
19. Li, H.; He, Y.; Shen, D.; Cheng, S.; Wang, J.; Liu, H.; Xing, C.; Shan, S.; Lu, C.; Yang, R. Design an in-situ reduction of Ni/C–SiO₂ catalyst and new insights into pretreatment effect for CH₄–CO₂ reforming reaction. *Int. J. Hydrog. Energy* **2017**, *42*, 10844–10853. [\[CrossRef\]](#)
20. Ashik, U.P.M.; Daud, W.M.A.W. Probing the differential methane decomposition behaviors of *n*-Ni/SiO₂, *n*-Fe/SiO₂ and *n*-Co/SiO₂ catalysts prepared by co-precipitation cum modified Stober method. *RSC Adv.* **2015**, *5*, 67227–67241. [\[CrossRef\]](#)
21. Zhu, J.; Peng, X.; Yao, L.; Tong, D.; Hu, C. CO₂ reforming of methane over Mg-promoted Ni/SiO₂ catalysts: The influence of Mg precursors and impregnation sequences. *Catal. Sci. Technol.* **2012**, *2*, 529–537. [\[CrossRef\]](#)
22. Mousavi, S.M.; Meshkani, F.; Rezaei, M. Preparation of nanocrystalline Zr, La and Mg-promoted 10% Ni/Ce_{0.95}Mn_{0.05}O₂ catalysts for syngas production via dry reforming reaction. *Int. J. Hydrog. Energy* **2018**, *43*, 6532–6538. [\[CrossRef\]](#)
23. Luengnaruemitchai, A.; Kaengsilalai, A. Activity of different zeolite-supported Ni catalysts for methane reforming with carbon dioxide. *Chem. Eng. J.* **2008**, *144*, 96–102. [\[CrossRef\]](#)
24. Li, X.-K.; Ji, W.-J.; Zhao, J.; Wang, S.-J.; Au, C.-T. Ammonia decomposition over Ru and Ni catalysts supported on fumed SiO₂, MCM-41, and SBA-15. *J. Cat.* **2005**, *236*, 181–189. [\[CrossRef\]](#)
25. Xu, Y.; Du, X.-h.; Li, J.; Wang, P.; Zhu, J.; Ge, F.-j.; Zhou, J.; Song, M.; Zhu, W.-y. A comparison of Al₂O₃ and SiO₂ supported Ni-based catalysts in their performance for the dry reforming of methane. *J. Fuel Chem. Tech.* **2019**, *47*, 199–208. [\[CrossRef\]](#)
26. Thommes, M.; Kaneko, K.; Neimark Alexander, V.; Olivier James, P.; Rodriguez-Reinoso, F.; Rouquerol, J.; Sing Kenneth, S.W. Physisorption of gases, with special reference to the evaluation of surface area and pore size distribution (IUPAC Technical Report). *Pure Appl. Chem.* **2015**, *87*, 1051. [\[CrossRef\]](#)

27. Li, Z.; Wang, Z.; Jiang, B.; Kawi, S. Sintering resistant Ni nanoparticles exclusively confined within SiO₂ nanotubes for CH₄ dry reforming. *Catal. Sci. Technol.* **2018**, *8*. [[CrossRef](#)]
28. Yaripour, F.; Shariatnia, Z.; Sahebdehfar, S.; Irandoukht, A. Effect of boron incorporation on the structure, products selectivities and lifetime of H-ZSM-5 nanocatalyst designed for application in methanol-to-olefins (MTO) reaction. *Microporous Mesoporous Mater.* **2015**, *203*, 41–53. [[CrossRef](#)]
29. Gong, D.; Li, S.; Guo, S.; Tang, H.; Wang, H.; Liu, Y. Lanthanum and cerium co-modified Ni/SiO₂ catalyst for CO methanation from syngas. *Appl. Surf. Sci.* **2018**, *434*, 351–364. [[CrossRef](#)]



© 2019 by the authors. Licensee MDPI, Basel, Switzerland. This article is an open access article distributed under the terms and conditions of the Creative Commons Attribution (CC BY) license (<http://creativecommons.org/licenses/by/4.0/>).